

INDUCIBLE STRUCTURAL DEFENSE

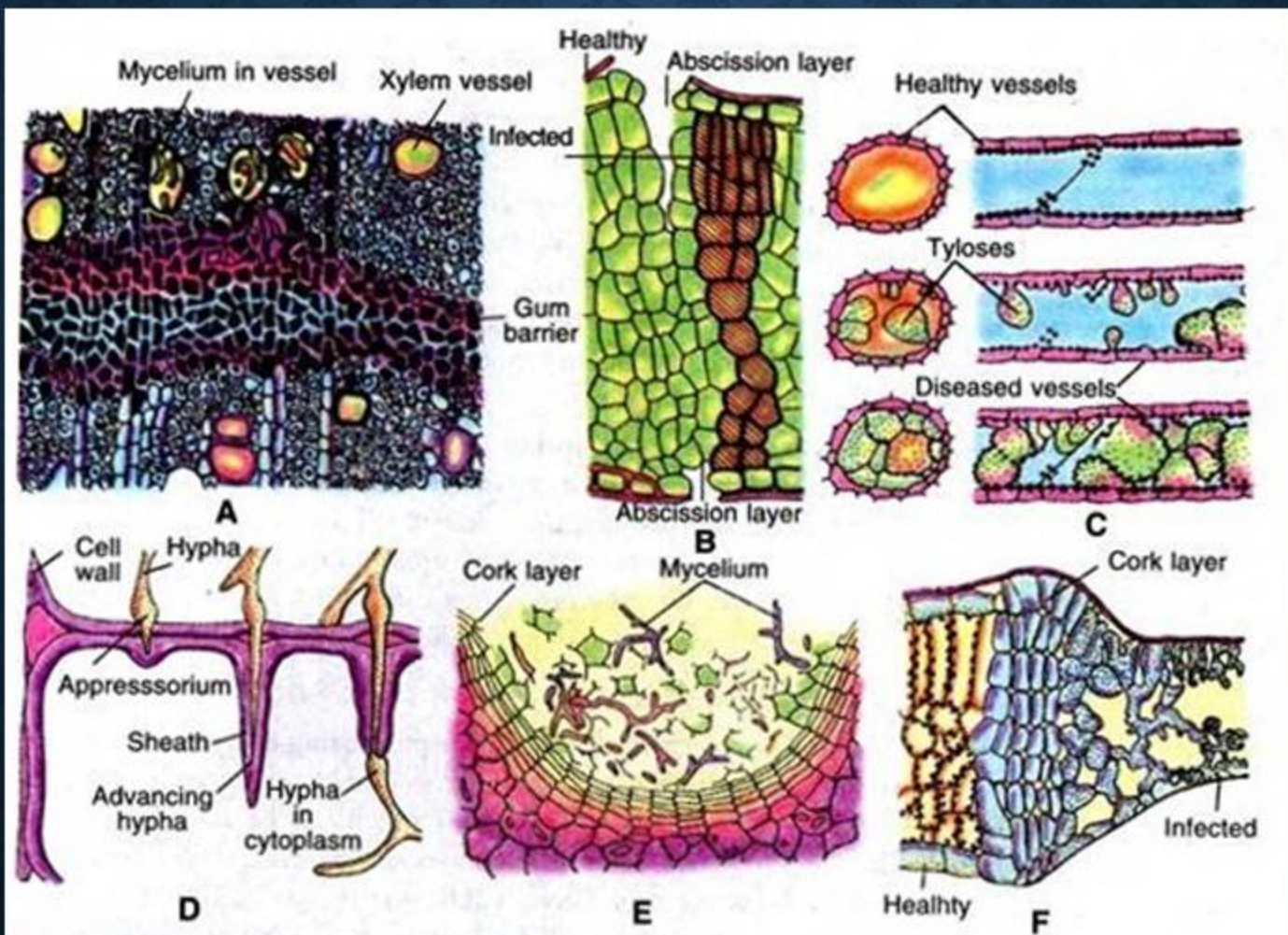


Fig. 21.1. (A-F). Different defence structures developed after infection : (A) Gum deposition in cells ; (B) Abscission layer ; (C) Tyloses ; (D) Formation of sheath around developing hyphae (E, F)./ Development of cork layer in tuber (E) and leaf (F).

INDUCIBLE STRUCTURAL DEFENSE

1. Histological defense

- Tylose formation (e.g. wilts)
- Corky layers (e.g. in potato to *Rhizoctonia solani*)
- Gum deposition
- Abscission layer (e.g. *Xanthomonas pruni*, shot hole)
- Formation of sheath around fungal hypha

2. Cellular defense altered walls of cells (changes in cell wall thickness, deposition of callose papillae).

3. Cytoplasmic defense

4. Hypersensitive response (HR)